

APARTMENT INFO

Unit Address:	111 W. Main St Apartment A Salisbury, MD 21801
Size/Bed/Bath:	1,600sf, 3 Bedroom, 2 Full Bath
Rent:	\$1,800.00/month
Security Deposit:	\$1,800.00
Availability Date:	3/15/2024

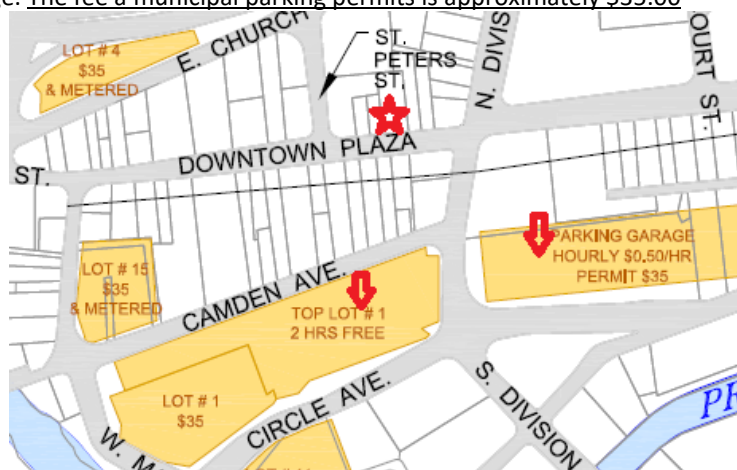
UTILITIES

Electric:	Approximately \$150-250/month Billed directly by Delmarva Power (1-800-375-7117) <i>(NOTE: given the size of the units and the ceiling heights, the electric bill will vary greatly based on your usage of the heating and air conditioning systems)</i>
Gas:	There is NO gas appliances or heating in the unit
Water:	Approximately \$85/Quarter Billed by landlord based on actual usage
Trash:	Trash pickup is included <i>(NOTE: the dumpster in the rear of the building is provided for household trash only, no furniture or bulk items may be placed in this dumpster)</i>
Cable:	Billed directly by Comcast Cable (1-800-934-6489)
Telephone:	Billed directly by Verizon (1-800-837-4966)
Internet:	Shared Wi-Fi is <u>included</u> in the rent <i>(NOTE: to protect the available bandwidth some service such as peer-to-peer file sharing have been blocked)</i>

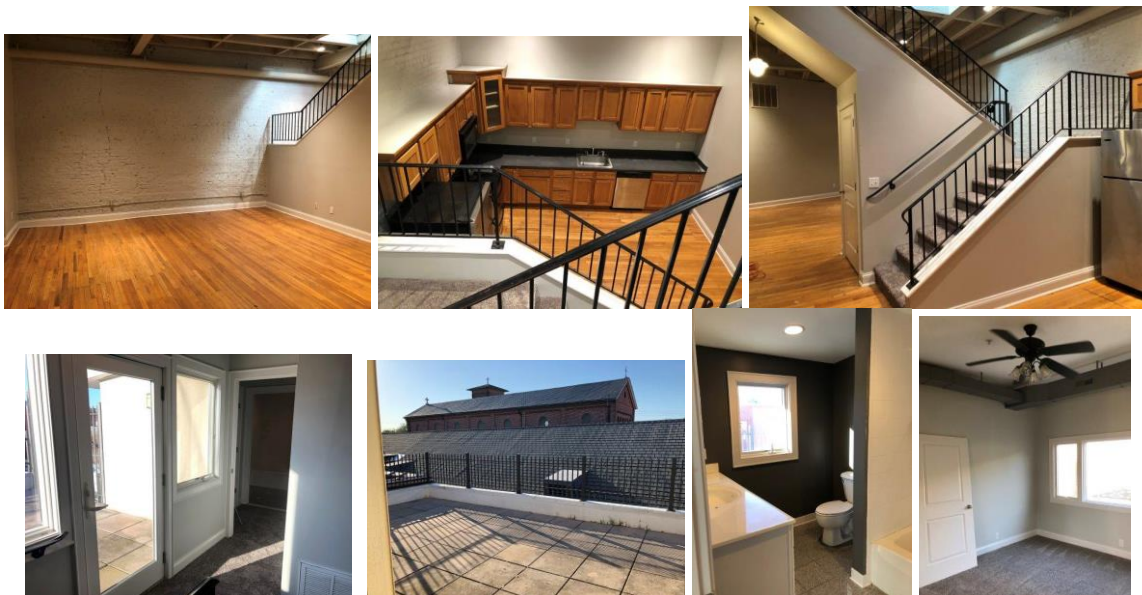
PARKING

Parking is NOT included with the unit; all residents must use municipal parking. Street parking on the Plaza and on Division street is free during non-business hours (outside of M-F 9:00a to 5:00p).

If parking is needed during the business day, permits by calling the City of Salisbury Parking office at 410-548-3190 (<http://www.ci.salisbury.md.us/departments/internal-services-parking-procurement>). The closest lot to the building is the 'Top Lot #1' and the Parking Garage. The fee a municipal parking permits is approximately \$35.00



PHOTOS



APPLICATION PROCESS

All applications are processed on a first-come-first-serve basis (the application will only be considered once all the application, application fee and any other documents are provided). Once an application is approved, the applicant shall have 24 hours to sign the lease and provide the full security deposit. If these actions are not completed within 24 hours, the application will be processed.

To process the application we must have:

- The completed application (linked below) with ALL fields filled out and submitted online at www.cclofts.com/application
- The NON-REFUNDABLE application fee of \$35 payable online by credit card (the second step of the application will prompt your for payment information)
- Any other required documentation as requested based on unique cases (such as grantor information, proof of alternate income, etc.)

The approval process evaluates the following criteria:

- Income & employment verification
- Credit history
- Rental history
- Criminal history

LEASE TERM

The standard lease term is 12 months. After the initial 12 month term, the lease will be automatically renewed on a month-to-month basis. During the renewal period, any move-out will require a 60 day notice.

A lease term as short as 6 months is available. This option is subject to landlord discretion. The rent due on a lease shorter than 12 months will be 10% higher than the advertised rate

PETS

One pet per unit (dog or cat) up to 50lbs is permitted. There will be an additional \$200.00 non-refundable pet fee and \$25.00/month pet rent

MOVE IN

Upon commencement of the lease, you may pick up keys at our office or arrange for delivery of them by calling the number above. The first month's rent must be paid in full prior to the keys being released